



New Features of ProRealTime Charts

TABLE OF CONTENTS



Introduction



New Features

➤ Improved interface.....	1
➤ Server-side backtesting.....	2
➤ Faster calculations.....	2
➤ Import & export.....	2
➤ Indicator & screener windows.....	3
■ Indicator window.....	3
■ Backtesting window.....	4
■ ProScreener window.....	5
➤ Easy order placement.....	6
➤ Contextual order placement.....	7
➤ Twitter & Facebook.....	8
➤ New Indicators.....	9
➤ Indicator projection.....	10
➤ Anti-aliasing.....	10
➤ Other new features.....	11

Introduction

The new version of the ProRealTime charts contains many improvements to the chart visualization and usability. We have also made improvements to the memory management and data processing so it runs more efficiently on your machines.

We present in this document the new features and improvements available to you in the new version of the ProRealTime Charts.

New Features



Improved interface Improved look & user experience

The new window interface introduces several features for a better user experience.

The screenshot shows the ProRealTime application window with several callouts highlighting new features:

- Magnetic windows :** easy placement of windows right next to each other with no space lost
- Title bar colors match platform colors** for a more unified appearance
- Pin** to set main window always on top
- Smaller window borders and title bars** to free more screen space for window content
- A click on any title bar** brings hidden windows to front

The interface includes a menu bar (File, Display, Objects, Templates, Options, Trading, Help), a toolbar with various charting tools, and a main chart area displaying a candlestick chart for EURUSD. The chart area also shows portfolio information, price data, and a time axis.



Server-side backtesting

Better performance. New instructions.

Server-side backtesting improved backtesting speed, performance and reliability and also prepared the application for automated trading introduced in version 10.1. This version introduces improvements to backtest handling and performance.

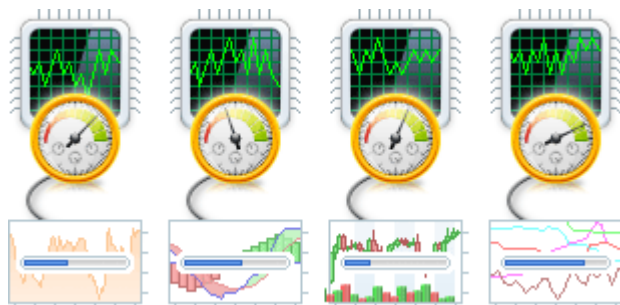
Several instructions and constants have been added to enhance trading system programming. Some instructions have been modified or removed to ensure compatibility between the backtesting module and automated execution of trading systems in real-time introduced in version 10. For additional details, please see the Trading system programming changelog annex at the end of this document.



Faster calculations

Improved multi-thread processor use and memory management

- The application now takes full advantage of multi-core processors for indicator calculations which results in faster loading of charts.
- Data processing methods were improved to allow faster display of charts and indicators to use less memory.



Import & export

Share indicators, trading systems and market scans

New buttons have been added to allow you to export and import codes including your personal indicators, ProBacktests, automatic trading systems and ProScreener market scans. This is very useful to share programs with friends, post them on forums or save a backup copy on your local computer.

To access the new import/export interface for indicators or trading systems, click this button on any chart:



You will see the import and export buttons :

You can export any program whose code is accessible. Three levels of protection are available for exported codes :

- None (default) : The code is fully editable after import.
- Code not modifiable after import
- Code not modifiable after import, only one import allowed for the exported file.



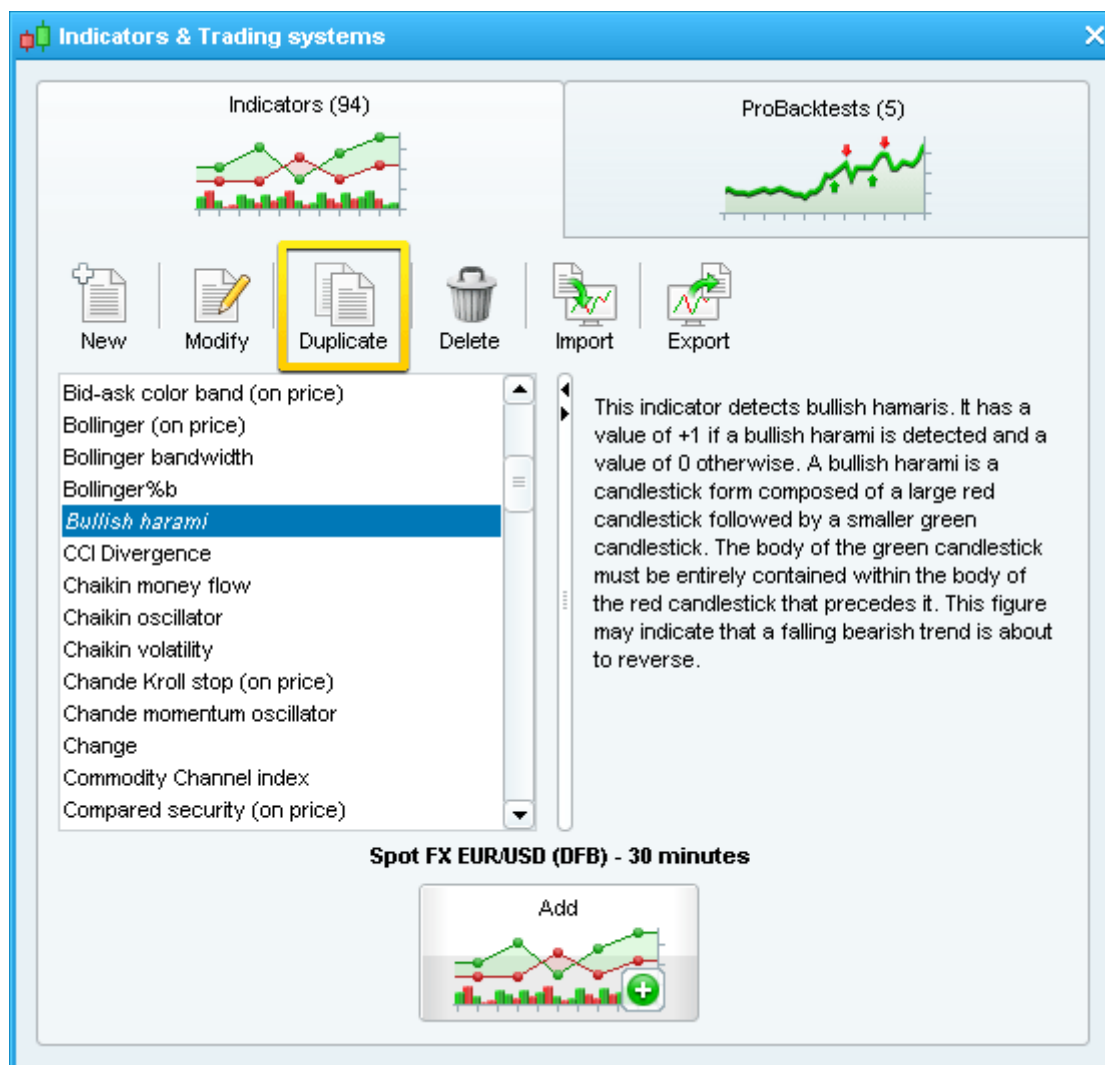
Indicator & screener windows

Redesigned Indicator, Trading system and ProScreener windows

The indicator, trading system and ProScreener management windows have been redesigned and have several new features (including import/export discussed above).

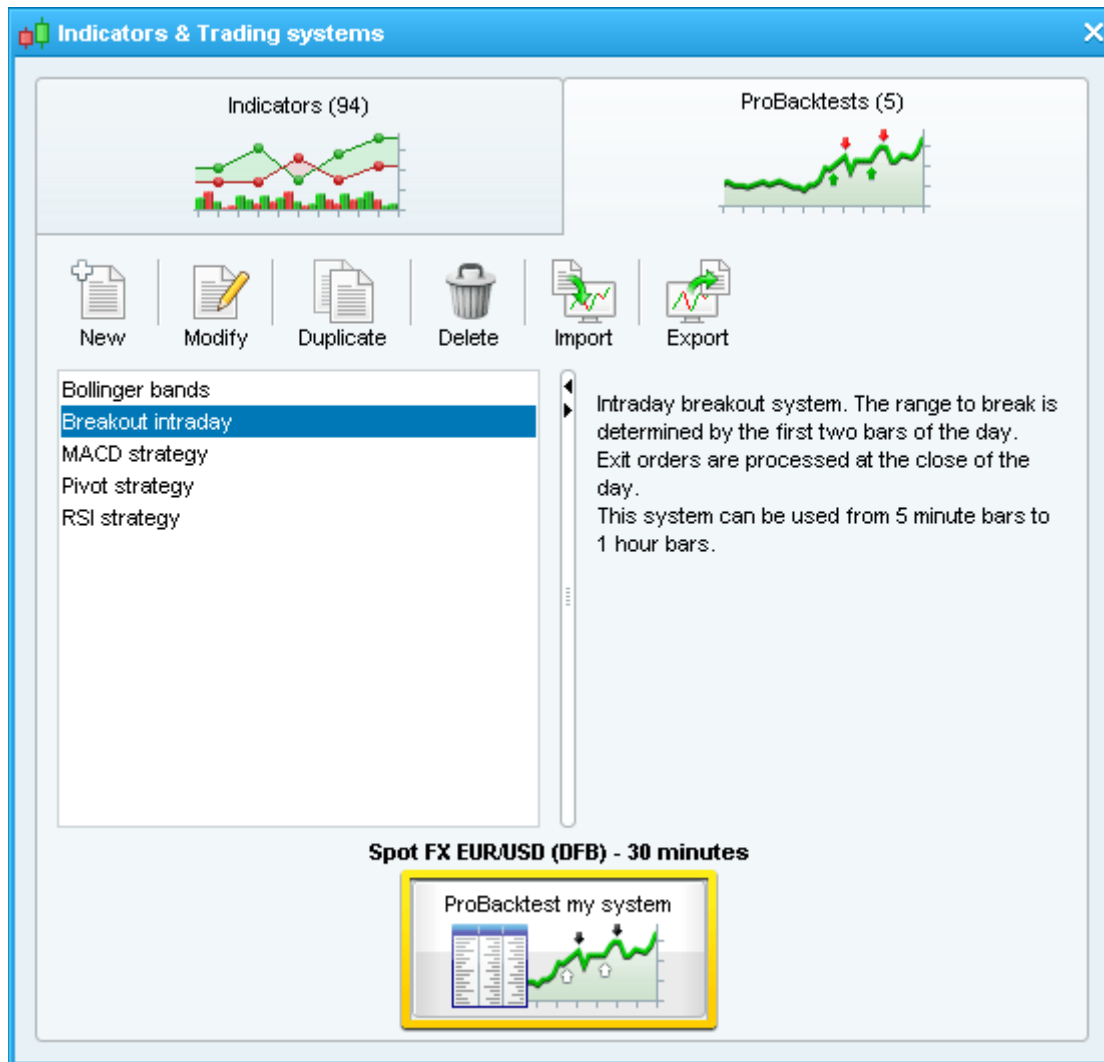
Indicator window

It is now easy to duplicate codes of your existing codes including indicators via the duplicate button shown below:



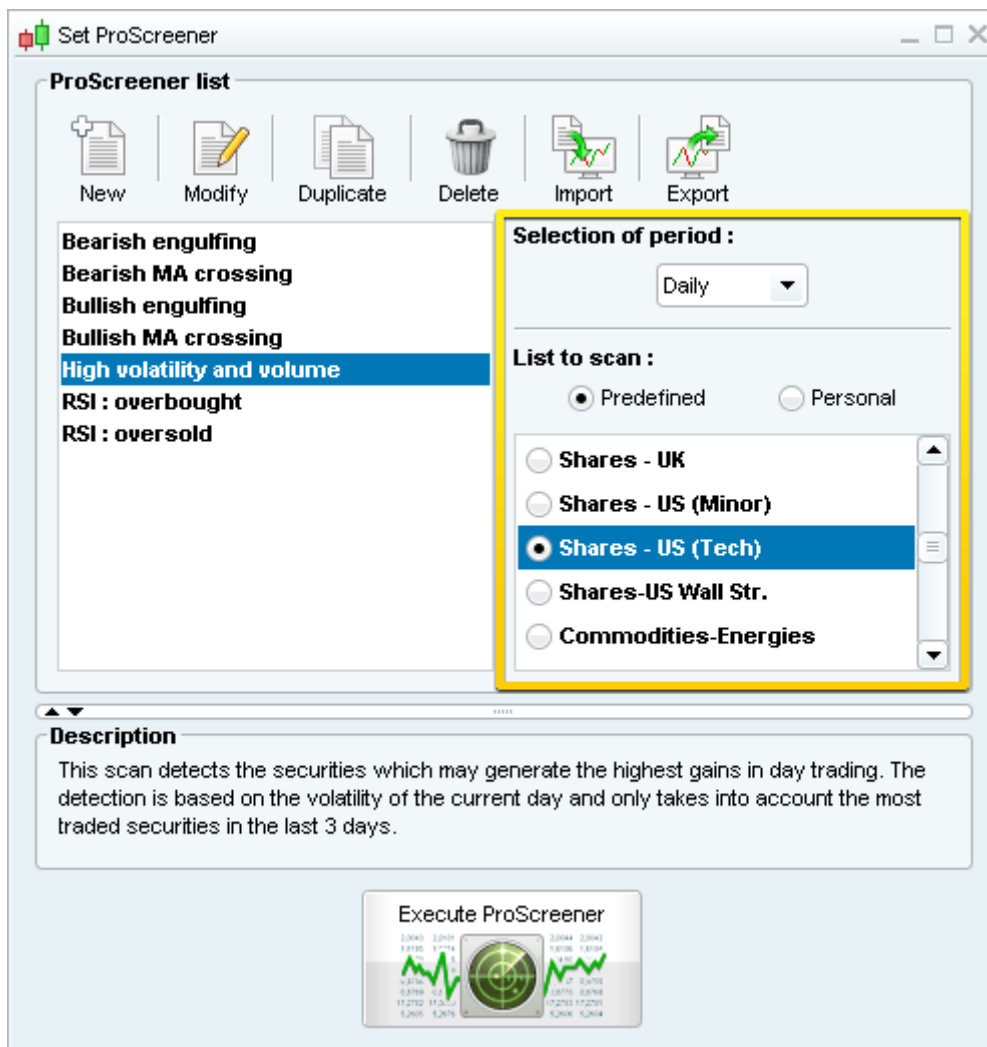
Backtesting window

You can now add a backtest to your chart from this window.



ProScreener window

You can now change the timeframe and market of your ProScreener scans directly from the "Set ProScreener" window. In the Premium version, you can scan multiple markets at the same time.





Easy order placement

Choose a simplified or advanced order interface

A new simplified order interface lets you place at market orders, limit orders, stop orders and trailing stop orders without the use of a dropdown menu to change order types. The previous interface which allows you to place OCO and multiple leg orders is still available too.



To select the new interface, click the wrench icon shown in yellow above and select "Simple orders only". You can customize the interface to display only the order types you use most with the checkboxes.

The 'Order access interface' window is shown with the 'Quick access interface' selected. It contains several checkboxes for order types: 'Limit order - Horizontal', 'Limit order - Oblique', 'Stop order - Horizontal', 'Stop order - Oblique', 'Trailing stop order', and 'At market order'. There is also a section for 'Possibility to link an order to:' with checkboxes for 'Stop' and 'Limit'. A 'Valid until' section is also present with options for 'No limit' and 'End of day'. A note at the bottom states: 'Note : At market orders always have "End of day" validity.'



Contextual order placement

Easily place targets, stops and trailing stops from positions

You can now place your mouse on any position shown on the chart and the application will intelligently offer you options to add target and stop orders to your positions.

To add an order, simply click on the order type of your choice and then place it on the chart.

The size of target and stop orders placed in this manner will be equal to the position size minus size of any existing targets or stops.



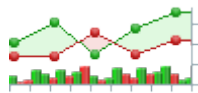


Twitter & Facebook

Improved chart sharing interface with social media integration

A new menu groups all options for sharing your charts including : E-mail, Print and Save. You can also share images of your charts on the social networking sites Twitter and Facebook:





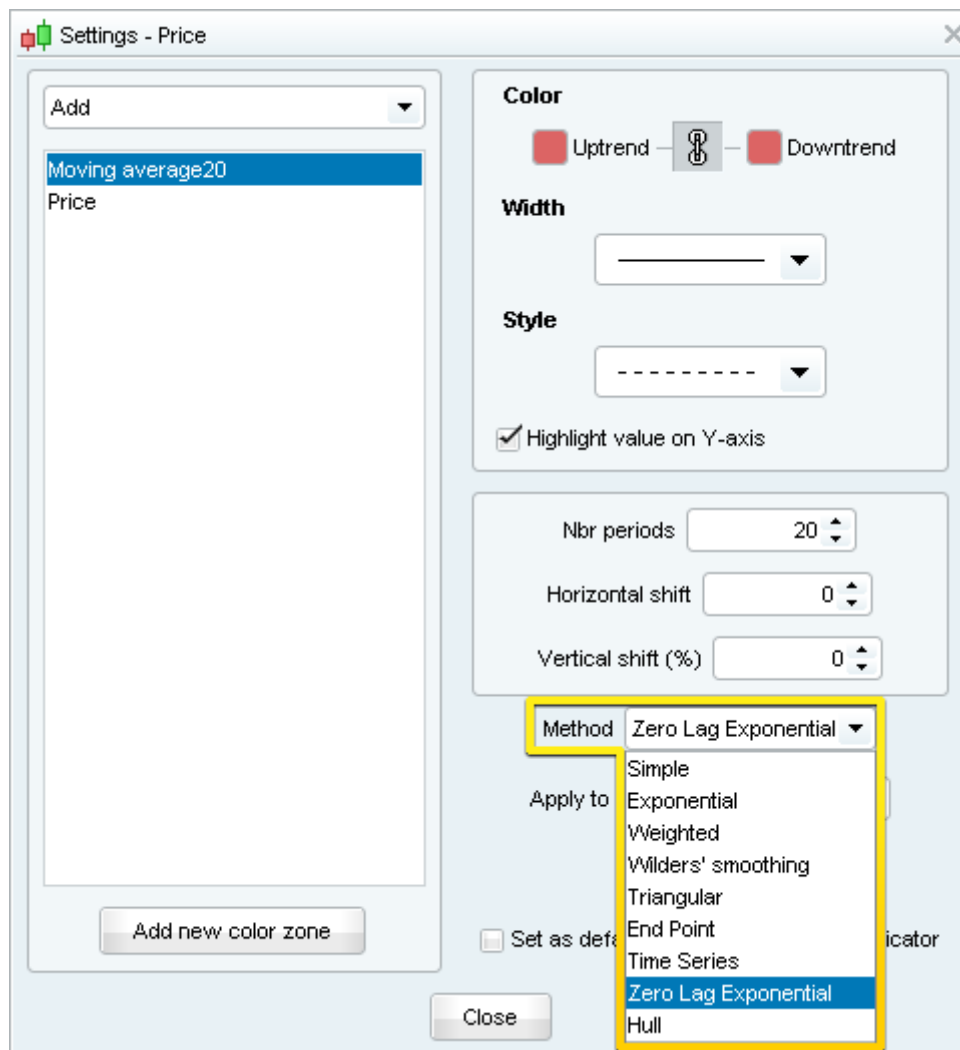
New Indicators

Now more than 100 preset indicators available

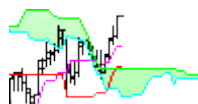
Several new technical analysis indicators have been added to the workstation :

- Pivot points (improved version with additional timeframes)
- Fractal Dimension Index
- Keltner Channel
- Donchian Channels
- PriceLine (horizontal line showing Open, High, Low, Close, Typical, Weighted, Medial, or Total price in the current or previous period and of any time frame)
- New moving average types: Zero Lag exponential moving average and Hull moving average
- Other moving averages : Adaptive moving average, Multiple smoothing moving average, Elastic volume weighted moving average

Note: the new moving average types can be found by adding a normal moving average to your chart and selecting "Method" in the "Settings" window:



Other moving average types such as adaptive moving average, multiple smoothing moving average and triple exponential moving average (TEMA) are separate indicators that can be found in the "Indicators & Trading systems" window.



Indicator projection

Plot ichimoku and moving averages in the future

It is now possible to project certain technical indicators such as Ichimoku into the future as shown below:



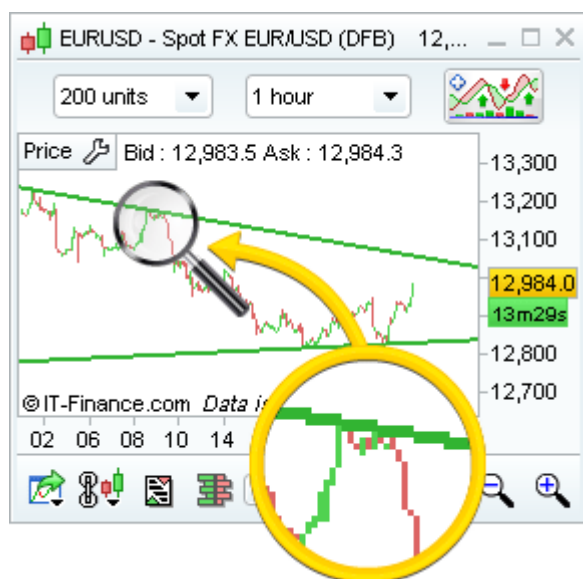
Anti-aliasing

Smoother lines

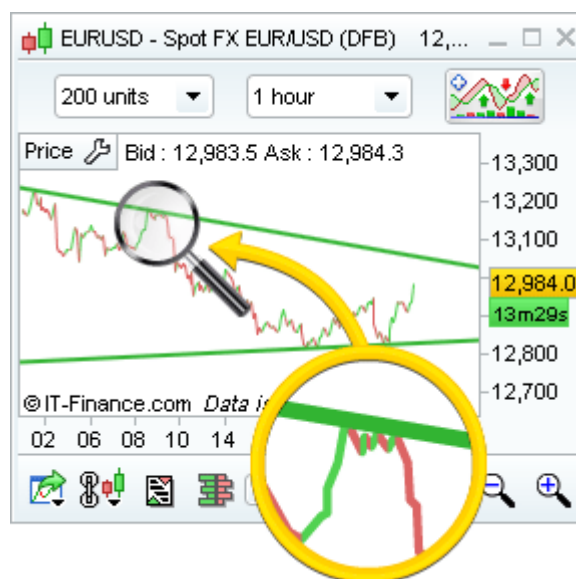
Activate anti-aliasing from the "Options" menu by selecting "Colors" and then checking the box "Anti-aliasing" in the "Charts" section.

his new option makes lines appear smoother.

Without anti-aliasing:



With anti-aliasing :



Other new features

- Code editor windows now contain line numbers.
- Undo/Redo keyboard shortcuts with Ctrl + Z and Ctrl + Y now available in code editing windows.
- New Find/Replace feature in code editing windows: press Ctrl + F to access it.
- Improved black color scheme: to see the default color schemes, open the "Options" > "Colors" window and click on the color of your choice.
- Real-time market price now displayed on Y-axis of the following views: Kagi, Point & Figure, Renko, Three Line Break, Heiken Ashi in addition to their specific close values
- Open chart icon now available in alerts list.
- Font smoothing.

10.32	38.78	84.20	75.50	120.57	8.27	21.57	91.27	26.07	70.13	59.75	13.65	35.24	10.32	38.78	84.20	75.50	120.57	8.27	21.57	91.27
-1.06	-0.71	-0.22	+0.28	+1.4	-0.04	-1.71	-0.95	-0.03	+0.54	+1.12	-0.09	-1.46	-1.06	-0.71	-0.22	+0.28	+1.4	-0.04	-1.71	-0.95



ProRealTime

The leading web-based charting software

